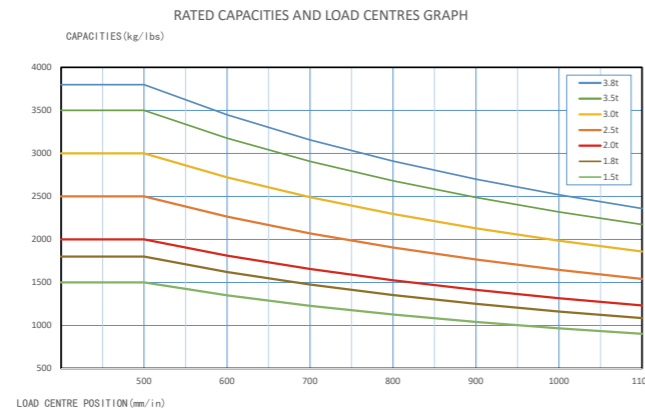


$AST = a + Wa + x + b$ a: Clearance (200mm)



1.5-mini2.0t(HA) Mast specification

Type	Model			Lifting height	Lowered overall height			Overall height				Free lift height				Tilt range FWD/RWD	Capacity (Mast vertical to ground)					
					mm		Without backrest		With backrest		Without backrest		With backrest		Load Capacity at 500mm			Double tire				
					1.5/1.8t	mini2.0t	1.5/1.8t	mini2.0t	1.5/1.8t	mini2.0t	1.5/1.8t	mini2.0t	1.5/1.8t	mini2.0t	1.5t		1.8t	mini2.0t	1.5t	1.8t	mini2.0t	
Duplex wide view mast	A2A15M200	A2A18M200	XEX20M200	2000	1495	1495	2548	2504	2955	2955	155	160	155	160	6/6	1500	1800	2000	1500	1800	2000	
	A2A15M250	A2A18M250	XEX20M250	2500	1745	1745	3048	3004	3455	3455	155	160	155	160	6/12	1500	1800	2000	1500	1800	2000	
	A2A15M270	A2A18M270	XEX20M270	2700	1845	1845	3248	3204	3655	3655	155	160	155	160	6/12	1500	1800	2000	1500	1800	2000	
	A2A15M300	A2A18M300	XEX20M300	3000	1995	1995	3548	3504	3955	3955	155	160	155	160	6/12	1500	1800	2000	1500	1800	2000	
	A2A15M330	A2A18M330	XEX20M330	3300	2145	2145	3848	3804	4255	4255	155	160	155	160	6/12	1500	1800	2000	1500	1800	2000	
	A2A15M360	A2A18M360	XEX20M360	3600	2345	2345	4148	4104	4555	4555	155	160	155	160	6/12	1500	1800	2000	1500	1800	2000	
	A2A15M400	A2A18M400	XEX20M400	4000	2595	2595	4548	4504	4955	4955	155	160	155	160	6/6	1500	1800	2000	1500	1800	2000	
	A2A15M430	A2A18M430	XEX20M430	4300	2745	2745	4848	4804	5255	5255	155	160	155	160	6/6	1500	1700	1850	1500	1750	2000	
	A2A15M450	A2A18M450	XEX20M450	4500	2845	2845	5048	5004	5455	5455	155	160	155	160	6/6	1500	1650	1850	1500	1700	1900	
	A2A15M480	A2A18M480	XEX20M480	4800	2995	2995	5348	5304	5755	5755	155	160	155	160	6/6	1400	1600	1750	1500	1650	1850	
Duplex full-free mast	A2A15M500	A2A18M500	XEX20M500	5000	3095	3095	5548	5504	5955	5955	155	160	155	160	6/6	1350	1550	1650	1400	1600	1750	
	A2A15U250	A2A18U250	XEX20U250	2500	1760	1745	3074	3060	3445	3445	1185	1185	815	800	6/12	1500	1800	2000	1500	1800	2000	
	A2A15U270	A2A18U270	XEX20U270	2700	1860	1845	3274	3260	3645	3645	1285	1285	915	900	6/12	1500	1800	2000	1500	1800	2000	
	A2A15U300	A2A18U300	XEX20U300	3000	2010	1995	3574	3560	3945	3945	1435	1435	1065	1050	6/12	1500	1800	2000	1500	1800	2000	
	A2A15U330	A2A18U330	XEX20U330	3300	2160	2145	3874	3860	4245	4245	1585	1585	1215	1200	6/12	1500	1800	2000	1500	1800	2000	
	A2A15U360	A2A18U360	XEX20U360	3600	2310	2295	4174	4160	4545	4545	1735	1735	1365	1350	6/12	1500	1800	2000	1500	1800	2000	
	A2A15U400	A2A18U400	XEX20U400	4000	2560	2545	4574	4560	4945	4945	1985	1985	1615	1600	6/12	1500	1800	2000	1500	1800	2000	
	A2A15N400	A2A18N400	XEX20N400	4000	1960	1945	4694	4655	4955	4955	1276	1392	1015	1000	6/6	1500	1800	1950	1500	1800	2000	
	A2A15N430	A2A18N430	XEX20N430	4300	2060	2045	4994	4955	5255	5255	1376	1492	1115	1100	6/6	1500	1650	1850	1500	1800	1950	
	A2A15N450	A2A18N450	XEX20N450	4500	2110	2095	5194	5037	5455	5455	1426	1542	1165	1150	6/6	1500	1650	1800	1500	1750	1900	
Triplex full-free mast	A2A15N470	A2A18N470	XEX20N470	4700	2210	2195	5394	5237	5655	5655	1526	1642	1265	1250	6/6	1400	1600	1750	1500	1650	1850	
	A2A15N480	A2A18N480	XEX20N480	4800	2260	2195	5494	5337	5755	5755	1576	1642	1315	1250	6/6	1400	1600	1750	1500	1650	1850	
	A2A15N500	A2A18N500	XEX20N500	5000	2360	2295	5694	5537	5955	5955	1676	1742	1415	1350	6/6	1400	1550	1700	1450	1600	1800	
	A2A15N550	A2A18N550	XEX20N550	5500	2560	2445	6194	6037	6455	6455	1876	1892	1615	1500	3/6	1250	1500	1650	1350	1550	1750	
	A2A15N600	A2A18N600	XEX20N600	6000	2810	2645	6694	6537	6955	6955	2126	2092	1865	1700	3/6	1100	1300	1450	1150	1400	1500	

SUBTRACT 100kg WITH INTEGRAL SIDESHIFTER, SUBTRACT 150kg WITH EXTERNAL SIDESHIFTER.

2-2.5t(H2) Mast specification

Type	Model	Lifting height	Lowered overall height	Overall height		Free lift height		Tilt range	Capacity [Mast vertical to ground]				
				Without backrest	With backrest	Without backrest	With backrest		Load Capacity at 500mm				
									Single Tire		Double tire		
									2t	2.5t	2t	2.5t	
mm	mm	mm	mm	mm	mm	[°]	kg	kg	kg	kg			
Duplex wide view mast	XR25M200	2000	1534	2707	3046	160	160	6/6	2000	2500	2000	2500	
	XR25M250	2500	1784	3207	3546	160	160	6/12	2000	2500	2000	2500	
	XR25M270	2700	1884	3407	3746	160	160	6/12	2000	2500	2000	2500	
	XR25M300	3000	2034	3707	4046	160	160	6/12	2000	2500	2000	2500	
	XR25M330	3300	2184	4007	4346	160	160	6/12	2000	2500	2000	2500	
	XR25M360	3600	2385	4307	4646	160	160	6/12	2000	2500	2000	2500	
	XR25M400	4000	2635	4707	5046	160	160	6/6	2000	2500	2000	2500	
	XR25M430	4300	2785	5007	5346	160	160	6/6	2000	2500	2000	2500	
	XR25M450	4500	2885	5207	5546	160	160	6/6	2000	2450	2000	2500	
	XR25M480	4800	3035	5507	5846	160	160	6/6	1950	2350	2000	2450	
	XR25M500	5000	3135	5707	6046	160	160	6/6	1850	2300	1950	2350	
	XR25M550	5500	3385	6207	6546	160	160	3/6	1750	2150	1900	2200	
	XR25M600	6000	3635	6707	7046	160	160	3/6	1550	1900	1800	2000	
	Duplex full-free mast	XR25U250	2500	1750	3179	3546	1010	703	6/12	2000	2500	2000	2500
		XR25U270	2700	1850	3379	3746	1110	803	6/12	2000	2500	2000	2500
XR25U300		3000	2000	3679	4046	1260	953	6/12	2000	2500	2000	2500	
XR25U330		3300	2150	3979	4346	1410	1103	6/12	2000	2500	2000	2500	
XR25U360		3600	2300	4279	4646	1560	1253	6/12	2000	2500	2000	2500	
Triplex full-free mast	XR25U400	4000	2550	4679	5046	1810	1503	6/12	2000	2500	2000	2500	
	XR25N400	4000	1950	4739	5046	1270	903	6/6	2000	2500	2000	2500	
	XR25N430	4300	2050	5039	5346	1370	1003	6/6	2000	2450	2000	2500	
	XR25N450	4500	2100	5239	5546	1420	1053	6/6	2000	2350	2000	2450	
	XR25N470	4700	2200	5439	5746	1520	1153	6/6	1950	2250	2000	2350	
	XR25N480	4800	2200	5539	5846	1520	1153	6/6	1950	2250	2000	2350	
	XR25N500	5000	2300	5739	6046	1620	1253	6/6	1850	2150	1950	2250	
	XR25N550	5500	2450	6239	6546	1770	1403	3/6	1750	2050	1900	2100	
	XR25N600	6000	2650	6739	7046	1970	1603	3/6	1550	1850	1800	1950	
	XR25N650	6500	2850	7239	7546	2170	1803	3/6	/	/	1550	1800	
	XR25N700	7000	3100	7739	8046	2420	2053	3/6	/	/	1150	1450	

SUBTRACT 100kg WITH INTEGRAL SIDESHIFTER, SUBTRACT 150kg WITH EXTERNAL SIDESHIFTER.

2-2.5t(HA) Mast specification

Type	Model	Lifting height	Lowered overall height	Overall height		Free lift height		Tilt range	Capacity [Mast vertical to ground]				
				Without backrest	With backrest	Without backrest	With backrest		Load Capacity at 500mm				
									Single Tire		Double tire		
									2t	2.5t	2t	2.5t	
mm	mm	mm	mm	mm	mm	[°]	kg	kg	kg	kg			
Duplex wide view mast	A2A25M200	2000	1499	2707	3046	160	160	6/6	2000	2500	2000	2500	
	A2A25M250	2500	1749	3207	3546	160	160	6/12	2000	2500	2000	2500	
	A2A25M270	2700	1849	3407	3746	160	160	6/12	2000	2500	2000	2500	
	A2A25M300	3000	1999	3707	4046	160	160	6/12	2000	2500	2000	2500	
	A2A25M330	3300	2149	4007	4346	160	160	6/12	2000	2500	2000	2500	
	A2A25M360	3600	2349	4307	4646	160	160	6/12	2000	2500	2000	2500	
	A2A25M400	4000	2599	4707	5046	160	160	6/6	2000	2500	2000	2500	
	A2A25M430	4300	2749	5007	5346	160	160	6/6	2000	2500	2000	2500	
	A2A25M450	4500	2849	5207	5546	160	160	6/6	2000	2450	2000	2500	
	A2A25M480	4800	2999	5507	5846	160	160	6/6	1950	2350	2000	2450	
	A2A25M500	5000	3099	5707	6046	160	160	6/6	1850	2300	1950	2350	
	A2A25M550	5500	3349	6207	6546	160	160	3/6	1750	2150	1900	2200	
	A2A25M600	6000	3599	6707	7046	160	160	3/6	1550	1900	1800	2000	
	Duplex full-free mast	A2A25U250	2500	1764	3179	3546	1025	619	6/12	2000	2500	2000	2500
		A2A25U270	2700	1864	3379	3746	1125	719	6/12	2000	2500	2000	2500
A2A25U300		3000	2014	3679	4046	1275	869	6/12	2000	2500	2000	2500	
A2A25U330		3300	2164	3979	4346	1425	1019	6/12	2000	2500	2000	2500	
A2A25U360		3600	2314	4279	4646	1575	1169	6/12	2000	2500	2000	2500	
Triplex full-free mast	A2A25U400	4000	2564	4679	5046	1825	1419	6/12	2000	2500	2000	2500	
	A2A25N400	4000	1964	4739	5046	1285	918	6/6	2000	2500	2000	2500	
	A2A25N430	4300	2064	5039	5346	1385	1018	6/6	2000	2450	2000	2500	
	A2A25N450	4500	2114	5239	5546	1435	1068	6/6	2000	2350	2000	2450	
	A2A25N470	4700	2214	5439	5746	1535	1168	6/6	1950	2250	2000	2350	
	A2A25N480	4800	2264	5539	5846	1585	1218	6/6	1950	2250	2000	2350	
	A2A25N500	5000	2364	5739	6046	1685	1318	6/6	1850	2150	1950	2250	
	A2A25N550	5500	2564	6239	6546	1885	1518	3/6	1750	2050	1900	2100	
	A2A25N600	6000	2814	6739	7046	2135	1768	3/6	1550	1850	1800	1950	
	A2A25N650	6500	3014	7239	7546	2335	1968	3/6	/	/	1550	1800	
	A2A25N700	7000	3264	7764	8046	2500	2218	3/6	/	/	1150	1450	

SUBTRACT 100kg WITH INTEGRAL SIDESHIFTER, SUBTRACT 150kg WITH EXTERNAL SIDESHIFTER.

3-3.8t(H2) Mast specification

Type	Model		Lifting height	Lowered overall height			Overall height				Free lift height				Tilt range	Capacity [Mast vertical to ground]					
							Without backrest		With backrest		Without backrest		With backrest			Load Capacity at 500mm					
							Single Tire		Double tire		Single Tire		Double tire								
							3t	3.5/3.8t	3t	3.5/3.8t	3t	3.5/3.8t	3t	3.5/3.8t		3t	3.5t	3.8t	3t	3.5t	3.8t
mm	mm	mm	mm	mm	mm	mm	mm	mm	mm	mm	mm	mm	mm	mm	[°]	kg	kg	kg	kg	kg	kg
Duplex wide view mast	XR30M200	XRZ35M200	2000	1554	1669	2767	2842	3145	3145	165	170	165	170	6/6	3000	3500	3800	3000	3500	3800	
	XR30M250	XRZ35M250	2500	1804	1919	3267	3342	3645	3645	165	170	165	170	6/12	3000	3500	3800	3000	3500	3800	
	XR30M270	XRZ35M270	2700	1904	2019	3467	3542	3845	3845	165	170	165	170	6/12	3000	3500	3800	3000	3500	3800	
	XR30M300	XRZ35M300	3000	2054	2169	3767	3842	4145	4145	165	170	165	170	6/12	3000	3500	3800	3000	3500	3800	
	XR30M330	XRZ35M330	3300	2204	2319	4067	4142	4445	4445	165	170	165	170	6/12	3000	3500	3800	3000	3500	3800	
	XR30M360	XRZ35M360	3600	2404	2469	4367	4442	4745	4745	165	170	165	170	6/12	3000	3500	3800	3000	3500	3800	
	XR30M400	XRZ35M400	4000	2654	2769	4767	4842	5145	5145	165	170	165	170	6/12	3000	3500	3800	3000	3500	3800	
	XR30M430	XRZ35M430	4300	2804	2919	5067	5142	5445	5445	165	170	165	170	6/6	3000	3400	3700	3000	3500	3800	
	XR30M450	XRZ35M450	4500	2904	3019	5267	5342	5645	5645	165	170	165	170	6/6	3000	3300	3600	3000	3400	3700	
	XR30M480	XRZ35M480	4800	3054	3169	5567	5642	5945	5945	165	170	165	170	6/6	2950	3200	3500	3000	3300	3600	
	XR30M500	XRZ35M500	5000	3154	3269	5767	5842	6145	6145	165	170	165	170	6/6	2850	3100	3400	2900	3200	3500	
	XR30M550	XRZ35M550	5500	3404	3519	6267	6342	6645	6645	165	170	165	170	3/6	2670	3000	3300	2750	3100	3400	
	XR30M600	XRZ35M600	6000	3654	3769	6767	6842	7145	7145	165	170	165	170	3/6	2350	2650	2950	2500	2800	3100	
	Duplex full-free mast	XR30U250	XRZ35U250	2500	1834	1934	3316	3391	3645	3645	1018	1043	689	789	6/12	3000	3500	3800	3000	3500	3800
		XR30U270	XRZ35U270	2700	1934	2034	3516	3591	3845	3845	1118	1143	789	889	6/12	3000	3500	3800	3000	3500	3800
XR30U300		XRZ35U300																			

Features

Color	Standard	Options
Yellow-black	●	
Other customized color		○
Particular market		
CE Standard		○
Cold storage environment		
-30°C		○
Mast		
Standard duplex mast	●	
Configuration Table of the Mast		○
Fork and attachment		
Standard fork	●	
Fork arm carrier	●	
Load backrest	●	
Non-standard series fork		○
Various attachments		○
Tires		
Pneumatic tire (single)	●	
Pneumatic tire (dual)		○
Solid tire (single)		○
Solid tire (dual)		○
Multiway valve		
Double multi-way valve	●	
Potionmeter for lift	●	
3rd vavle		○
4th vavle		○
5th vavle (2.0-3.8t)		○
Tiller		
Lifting and tilting level	●	
Fingertip system		○
Battery		
Standard lithium battery	●	
Large-capacity lithium battery		○
Quick-change lithium battery		○
On-board charger		○
Light		
LED head lamp	●	
Turn signal lamp	●	
LED rear combination lamp	●	
Common alarm lamp		○
Acoustic and optical alarm lamp		○
LED rear lamp		○
Blue light		○
Straight projection lamp		○
Horn		
Electric horn	●	
Reverse buzzer	●	
Right rear armrest with horn button		○
Smart module		
FIMS[Fleet intelligent management system]		○

Features

Safety configuration	Standard	Options
Emergency power-off switch	●	
Fuse box	●	
Soft landing (Only for the wide view duplex mast)	●	
Reversing radar		○
OPS system		○
Fire extinguisher		○
Ascending buffering		○
Parking brake		
Mechanical handbrake	●	
EPB[Electric Parking Brake]		○
Instrument rack space		
Smart color-screen instrument (speed mode selection)	●	
Combination switch	●	
Cigarette lighter		○
USB port		○
Electronic code lock (start by swiping a card)		○
Driving space		
Standard overhead guard	●	
Central rear view mirror	●	
Front windshield		○
PVC ceiling		○
Cab		○
Electric fan		○
Left and right rear view mirrors		○
Seat		
Standard seat	●	
Fully-suspended seat		○
Semi-suspended seat		○
Other standard configuration		
Drive and lifting controllers	●	
Driving and lifting motors	●	
Silent gear pump	●	
DC-DC converter	●	
Pedal pad	●	
Traction pin	●	
Integral stamped side panel and hood	●	