

## 1.2t Mast Specification

Type	Max. lifting height h <sub>3</sub>	Ground clearance, fork (h <sub>3</sub> +h <sub>12</sub> )	Lowered height h <sub>1</sub>	Extended height h <sub>4</sub>	Free lift
	mm	mm	mm	mm	mm
Double cylinder duplex wide view	2100 <sup>1)</sup>	2190	1540	2590	90
	2500 <sup>2)</sup>	2590	1740	2990	90
	2700	2790	1840	3190	90
	3000	3090	1990	3490	90
	3200	3290	2090	3690	90
	3400	3490	2190	3890	90
	3600	3690	2290	4090	90
Duplex full-free wide view	2100 <sup>1)</sup>	2190	1540	2590	1070
	2500 <sup>2)</sup>	2590	1740	2990	1270
	2700	2790	1840	3190	1370
	3000	3090	1990	3490	1520
	3200	3290	2090	3690	1620
	3400	3490	2190	3890	1720
	3600	3690	2290	4090	1820
Triplex full-free wide view	3600 <sup>2)</sup>	3690	1660	4080	1195
	3900 <sup>3)</sup>	3990	1760	4380	1295
	4100 <sup>3)</sup>	4190	1830	4580	1360
	4300	4390	1890	4780	1425
	4500	4590	1960	4980	1495
	4700	4790	2030	5180	1560

Note: 1) Optional feature for battery side roll out was necessary, It can make changing the battery easier

## 1.4-1.6t Mast Specification

Type	Max. lifting height h <sub>3</sub>	Ground clearance, fork (h <sub>3</sub> +h <sub>12</sub> )	Lowered height h <sub>1</sub>	Extended height h <sub>4</sub>	Free lift
	mm	mm	mm	mm	mm
Double cylinder duplex wide view	2000 <sup>1)</sup>	2090	1540	2540	90
	2400 <sup>2)</sup>	2490	1740	2940	90
	2700	2790	1890	3240	90
	2900	2990	1990	3440	90
	3000	3090	2040	3540	90
	3300	3390	2190	3840	90
	3500	3590	2290	4040	90
	3800	3890	2440	4340	90
	4200	4290	2640	4740	90
	4500	4590	2790	5040	90
	2000 <sup>1)</sup>	2090	1540	2540	1020
	2400 <sup>2)</sup>	2490	1740	2940	1220
	2700	2790	1890	3240	1370
	3000	3090	2040	3540	1520
	3300	3390	2190	3840	1670
3500	3590	2290	4040	1770	
3500 <sup>3)</sup>	3590	1660	4020	1160	
3800 <sup>3)</sup>	3890	1760	4320	1260	
4000 <sup>3)</sup>	4090	1830	4520	1330	
4200	4290	1890	4720	1390	
4500	4590	2030	5020	1490	
4700	4790	2090	5220	1560	
4800	4890	2090	5320	1590	
5000	5090	2160	5520	1660	
5200	5290	2230	5720	1730	
5500	5590	2330	6020	1830	
6000	6090	2500	6520	2000	

Note: 1) Optional feature for battery side roll out was necessary, It can make changing the battery easier

## 2.0t Mast Specification

Type	Max. lifting height h <sub>3</sub>	Ground clearance, fork (h <sub>3</sub> +h <sub>12</sub> )	Lowered height h <sub>1</sub>	Extended height h <sub>4</sub>	Free lift
	mm	mm	mm	mm	mm
Double cylinder duplex wide view	2050 <sup>1)</sup>	2140	1660	2690	90
	2250 <sup>1)</sup>	2340	1760	2890	90
	2400 <sup>1)</sup>	2490	1830	3030	90
	2700	2790	1990	3340	90
	3000	3090	2140	3640	90
	3200	3290	2240	3840	90
	3400	3490	2340	4040	90
	3600	3690	2440	4240	90
	3800	3890	2540	4440	90
	4000	4090	2640	4640	90
	4300	4390	2850	5000	90
	4500	4590	2950	5200	90
	2050 <sup>1)</sup>	2140	1660	2690	1020
	2350 <sup>1)</sup>	2340	1760	2890	1120
	2400 <sup>1)</sup>	2490	1830	3030	1200
2700	2790	1990	3340	1350	
3000	3090	2140	3640	1500	
3200	3290	2240	3840	1300	
3400	3490	2340	4040	1700	
3600	3690	2440	4240	1800	
3500 <sup>1)</sup>	3590	1800	4150	1185	
3800	3890	1900	4450	1280	
4000	4090	1965	4650	1300	
4200	4290	2030	4850	1395	
4500	4590	2130	5150	1495	
4800	4890	2230	5450	1595	
5000	5090	2330	5650	1660	
5500	5590	2485	6150	1830	
6000	6090	2640	6650	2000	

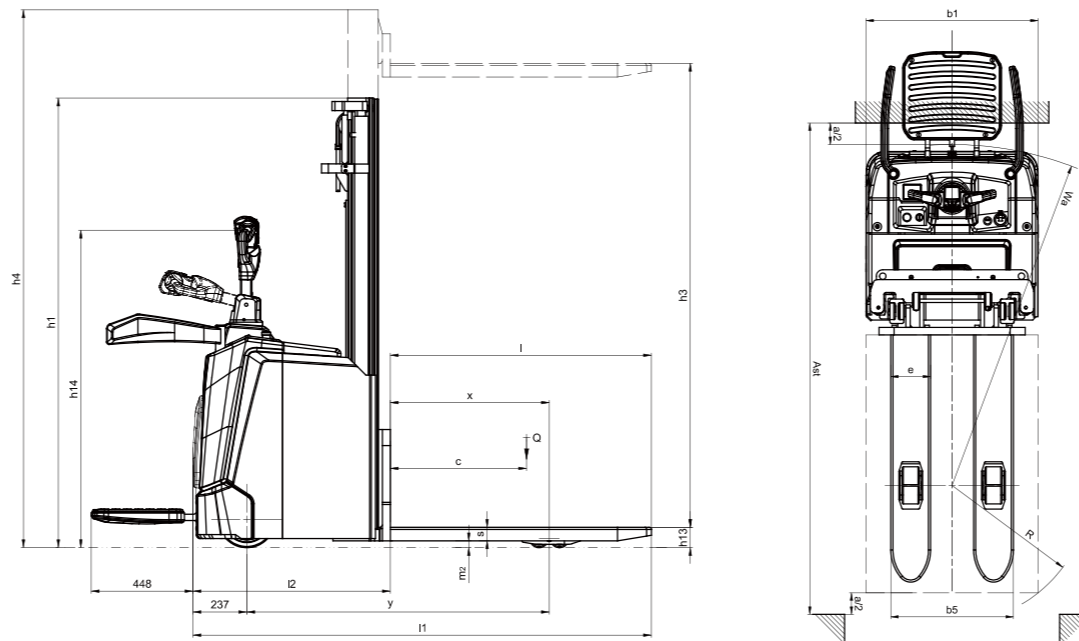
Note: 1) Optional feature for battery side roll out was necessary, It can make changing the battery easier

## Technical data

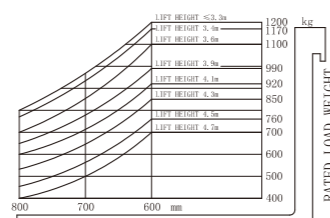
Distinguishing mark	1.1	HANGCHA GROUP CO.,LTD.				
	1.2	Manufacturer's type designation	CDD12-XT1S-SI CDD12-XT1S-SIF2 CDD12-XT1S-SIA*	CDD14-XT1S-SI CDD14-XT1S-SIF2 CDD14-XT1S-SIA*	CDD16-XT1S-SI CDD16-XT1S-SIF2 CDD16-XT1S-SIA*	CDD20-XT1S-SI CDD20-XT1S-SIF2 CDD20-XT1S-SIA*
Weight	1.3	Drive: electric (battery type, mains, ...), diesel, petrol, fuel gas	Electric	Electric	Electric	Electric
	1.4	Operator type: hand, pedestrian, standing, seated, order-picker	Standing	Standing	Standing	Standing
Tyres, chassis	1.5	Rated capacity / rated load	kg 1200	1400	1600	2000
	1.6	Load centre distance	c (mm) 600	600	600	600
Dimensions	1.8	Load distance, centre of drive axle to fork	x (mm) 700	700	700	700
	1.9	Wheelbase	y (mm) 1296	1331	1331	1331
	2.1	Service weight	kg 1200	1220	1230	1260
	2.2	Axle loading, laden front/rear	kg 876/1524	956/1664	1033/1797	1190/2070
	2.3	Axle loading, unladen front/rear	kg 840/360	854/366	861/369	882/378
	3.1	Tyres: solid rubber, superelastic, pneumatic, polyurethane	PU	PU	PU	PU
	3.2	Tyre size, front	Ø250-80	Ø250-80	Ø250-80	Ø250-80
	3.3	Tyre size, rear	Ø83-80	Ø83-80	Ø83-80	Ø83-80
	3.4	Additional wheels (dimensions)	Ø140-55	Ø140-55	Ø140-55	Ø140-55
	3.5	Wheels, number front/rear [- driven wheels]	1x +1/4	1x +1/4	1x +1/4	1x +1/4
	3.6	Tread, front	b10 (mm) 516	516	516	516
	3.7	Tread, rear	b11 (mm) 385	385	385	385
	4.2	Height, mast lowered	h1 (mm) 1840	1890	1890	1890
	4.3	Free lift	h2 (mm) 90	90	90	90
	4.4	Lift	h3 (mm) 2700	2700	2700	2700
4.5	Height, mast extended	h4 (mm) 3190	3240	3240	3340	
Performance data	4.9	Height drawbar in driving position min./max.	h14 (mm) 1170/1400	1170/1400	1170/1400	1170/1400
	4.15	Height, lowered	h13 (mm) 90	90	90	90
	4.19	Overall length	l1 (mm) 1987 <sup>3)</sup>	2019 <sup>3)</sup>	2019 <sup>3)</sup>	2019 <sup>3)</sup>
	4.20	Length to face of forks	l2 (mm) 834 <sup>3)</sup>	869 <sup>3)</sup>	869 <sup>3)</sup>	869 <sup>3)</sup>
	4.21	Overall width	b1/b2 (mm) 800	800	800	800
	4.22	Fork dimensions DIN ISO 2331	s/e/l (mm) 60/185/1150	60/185/1150	60/185/1150	65/185/1150
	4.25	Fork spread	bs (mm) 570	570	570	570
	4.32	Ground clearance, centre of wheelbase	m2 (mm) 25	25	25	25
	4.34.1	Aisle width for pallets 1000 * 1200 crossways	Ast (mm) 2201[2632] <sup>1)3)</sup>	2236[2667] <sup>1)3)</sup>	2236[2667] <sup>1)3)</sup>	2236[2667] <sup>1)3)</sup>
	4.34.2	Aisle width for pallets 800 * 1200 lengthways	Aat (mm) 2251[2682] <sup>1)3)</sup>	2286[2717] <sup>1)3)</sup>	2286[2717] <sup>1)3)</sup>	2286[2717] <sup>1)3)</sup>
	4.35	Turning radius	Wa (mm) 1551[1982] <sup>1)3)</sup>	1586[2017] <sup>1)3)</sup>	1586[2017] <sup>1)3)</sup>	1586[2017] <sup>1)3)</sup>
	5.1	Travel speed, laden/unladen	km/h 9/11	9/11	9/11	8/10
	5.2	Lift speed, laden/unladen	m/s 0.225/0.47	0.195/0.4	0.18/0.4	0.16/0.34
	5.3	Lowering speed, lade/unladen	m/s 0.45/0.4	0.45/0.4	0.45/0.4	0.5/0.4
	5.8	Max. gradeability, laden/unladen	% 10/16	10/16	8/16	8/16
5.10	Service brake	Regenerative	Regenerative	Regenerative	Regenerative	
Electric engine	6.1	Drive motor rating S2 60 min	kW 2.2	2.2	2.2	2.2
	6.2	Lift motor rating at S3 15 %	kW 4.2	4.2	4.2	4.2
	6.4	Battery voltage / nominal capacity	V/Ah 48/105	48/105	48/105	48/105
	6.5	Battery weight	kg 60	60	60	60

Note: 1) According to VDI2198 standard+220mm. 2)According to VDI2198 standard+140mm. 3)Triplex full-free+21mm

✳ F2: Means the cold storage truck model F2 are suitable for use in cold storage environments down to -30 °C.  
\* A: Anti-corrosion protection, the type A is suitable for environments with CS-1 and CS-M ratings.

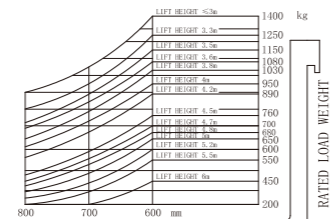


### Rated Capacities and Load Centres Graph

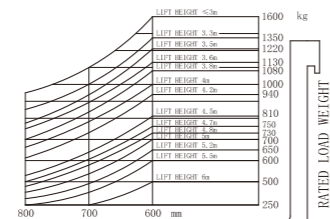


1.2t

### Rated Capacities and Load Centres Graph

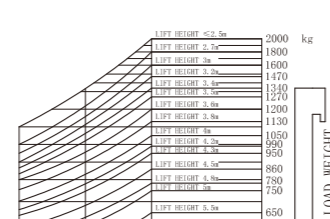


1.4t



1.6t

### Rated Capacities and Load Centres Graph



2.0t

## Technical data

Distinguishing mark	1.1	HANGCHA GROUP CO.,LTD.				
	1.2	Manufacturer's type designation	CDD12-XT1-SI	CDD14-XT1-SI	CDD16-XT1-SI	CDD20-XT1-SI
Weight	1.3	Drive: electric (battery type, mains, ...), diesel, petrol, fuel gas	Electric	Electric	Electric	Electric
	1.4	Operator type: hand, pedestrian, standing, seated, order-picker	Pedestrian	Pedestrian	Pedestrian	Pedestrian
Tyres, chassis	1.5	Rated capacity / rated load	kg 1200	1400	1600	2000
	1.6	Load centre distance	c (mm) 600	600	600	600
Dimensions	1.8	Load distance, centre of drive axle to fork	x (mm) 700	700	700	700
	1.9	Wheelbase	y (mm) 1318	1318	1318	1318
	2.1	Service weight	kg 1020	1040	1040	1080
	2.2	Axle loading, laden front/rear	kg 625/1595	685/1755	740/1900	865/2215
	2.3	Axle loading, unladen front/rear	kg 685/335	700/340	700/340	725/355
	3.1	Tyres: solid rubber, superelastic, pneumatic, polyurethane	PU	PU	PU	PU
	3.2	Tyre size, front	Ø250-80	Ø250-80	Ø250-80	Ø250-80
	3.3	Tyre size, rear	Ø83-80	Ø83-80	Ø83-80	Ø83-80
	3.4	Additional wheels (dimensions)	Ø140-55	Ø140-55	Ø140-55	Ø140-55
	3.5	Wheels, number front/rear [- driven wheels]	1x +1/4	1x +1/4	1x +1/4	1x +1/4
	3.6	Tread, front	b10 (mm) 510	510	510	510
	3.7	Tread, rear	b11 (mm) 385	385	385	385
	4.2	Height, mast lowered	h1 (mm) 1840	1890	1890	1890
	4.3	Free lift	h2 (mm) 90	90	90	90
	4.4	Lift	h3 (mm) 2700	2700	2700	2700
4.5	Height, mast extended	h4 (mm) 3190	3240	3240	3340	
4.9	Height drawbar in driving position min./max.	h14 (mm) 790/1205	790/1205	790/1205	790/1205	
4.15	Height, lowered	h13 (mm) 90	90	90	90	
4.19	Overall length	l1 (mm) 1934 <sup>3)</sup>	1934 <sup>3)</sup>	1934 <sup>3)</sup>	1934 <sup>3)</sup>	
4.20	Length to face of forks	l2 (mm) 784 <sup>3)</sup>	784 <sup>3)</sup>	784 <sup>3)</sup>	784 <sup>3)</sup>	
4.21	Overall width	b1/b2 (mm) 800	800	800	800	
4.22	Fork dimensions DIN ISO 2331	s/e/l (mm) 60/185/1150	60/185/1150	60/185/1150	65/185/1150	
4.25	Fork spread	bs (mm) 570	570	570	570	
4.32	Ground clearance, centre of wheelbase	m2 (mm) 25	25	25	25	
4.34.1	Aisle width for pallets 1000 * 1200 crossways	Ast (mm) 2200 <sup>1)3)</sup>	2200 <sup>1)3)</sup>	2200 <sup>1)3)</sup>	2200 <sup>1)3)</sup>	
4.34.2	Aisle width for pallets 800 * 120					